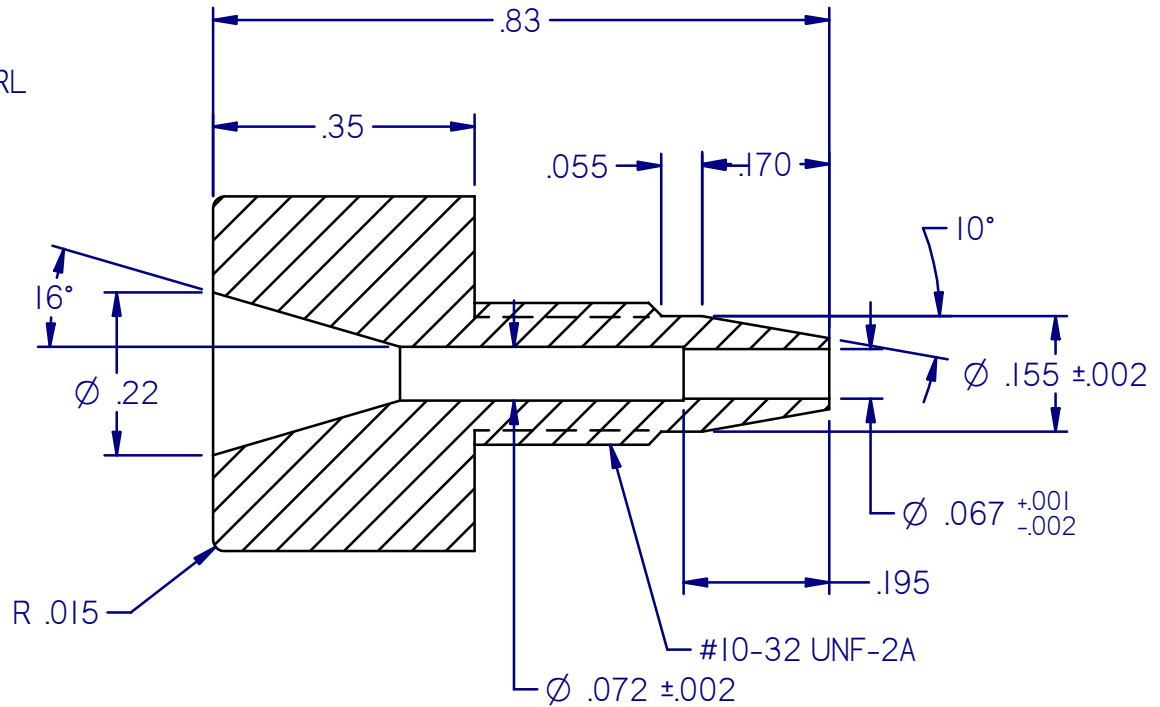
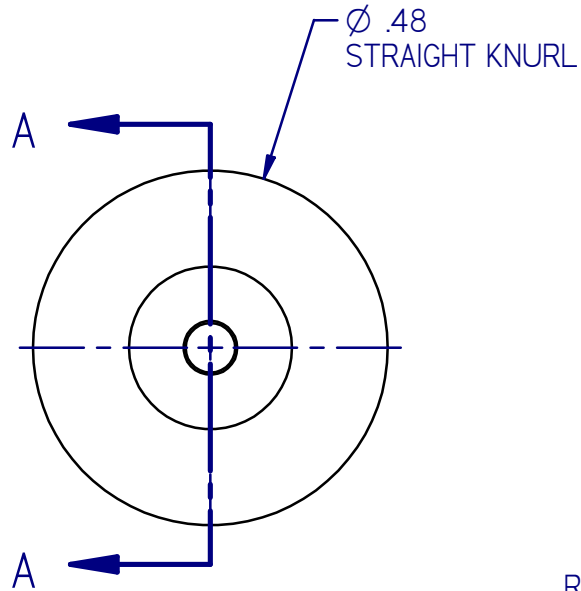


Revisions			
Rev	Description	Date	Initials
F	Updated drawing from old cad program	11/1/2010	TPA
G	Updated drawing to match actual mold features and dimension	3/26/2014	DVK



### SECTION A-A

**NOTES:**

1. REMOVE ALL BURRS.
2. SURFACE FINISH AS MOLDED.
3. ALL RADII TO BE .031" MAX, UNLESS NOTED.
4. ALL DRAFT ANGLES TO BE 1° MAX, UNLESS NOTED.

<b>CONFIDENTIAL:</b>		<b>GRACE Davison</b>		GRACE Davison Discovery Sciences 2051 Waukegan Road, Deerfield, IL 60015 (847) 948-8600	
This drawing is the property of Alltech Associates, Inc. Any reproductions or modifications of this drawing or its contents without consent of Alltech is prohibited.		DESCRIPTION: Knurl-Lok Fitting			
MATERIAL: PEEK			P/N: 2110663		
GENERAL TOLERANCES DECIMAL: XX ±.010"; XXX ±.005" FRACTIONAL: ± 1/64" ANGULAR: ±1/2° UNLESS OTHERWISE SPECIFIED		DRAWN: DVK	APPROVED: SPS	DATE: 03/26/14	
63/	SCALE: 4 = 1 SIZE A	DRAWING NO: 0000368		REV G	SHEET 1 OF 1